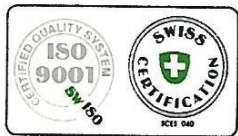


## LAMDA-CYHALOTHRIN TECHNICAL (liquid)

### Description of Technical

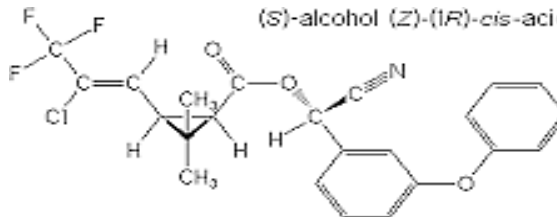
Lambda-cyhalothrin is a synthetic pyrethroid insecticide and acaricide used to control a wide range of pests in a variety of applications. Pests controlled include aphids, Colorado beetles and butterfly larvae. Crops on which it may be applied include cotton, cereals, hops, ornamentals, potatoes, vegetables or others.

<b>Common Name</b>	:	Lambda-cyhalothrin
<b>IUPAC Name</b>	:	(R)-a-cyano-3-phenoxybenzyl (1S)-cis-3-[(Z)-2-chloro-3,3,3-trifluoropropenyl]-2,2-dimethylcyclopropanecarboxylate and  (S)-a-cyano-3-phenoxybenzyl (1R)-cis-3-[(Z)-2-chloro-3,3,3-trifluoropropenyl]-2,2-dimethylcyclopropanecarboxylate
<b>C.A. Name</b>	:	(R)-cyano(3-phenoxyphenyl)methyl (1S,3S)-rel-3-[(1Z)-2-chloro-3,3,3-trifluoro-1-propenyl]-2,2-dimethylcyclopropanecarboxylate
<b>Chemical Family</b>	:	Pyrethroid
<b>Empirical formula</b>	:	$C_{23}H_{19}ClF_3NO_3$
<b>Molecular Weight (g mol<sup>-1</sup>)</b>	:	449.85
<b>C.A.S. No.</b>	:	91465-08-6
<b>Empirical formula</b>	:	$C_{23}H_{19}ClF_3NO_3$

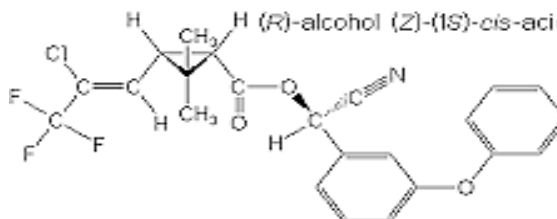


**Structural Formula**

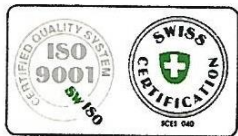
: (S)-alcohol (Z)-(1R)-cis-acid



: (R)-alcohol (Z)-(1S)-cis-acid



<b>Physical State</b>	: Green/brown liquid
<b>Melting Point</b>	: 47.5–48.5 °C
<b>Odour</b>	: odorless
<b>Density</b>	: 0.924 g/l at 23 °C
<b>Vapour Pressure</b>	: 0.0002 mPa at 25 °C
<b>Flash Point</b>	: 68 °C
<b>Explosion Hazard</b>	: Not explosive or oxidising
<b>Solubility in water</b>	: 0.005 mg/l at 20 °C
<b>Stability</b>	: Stable on storage for more than 6 months at 15-25 °C



## LAMDA-CYHALOTHRIN TECHNICAL

### Sales Specification

<b>A.I. content by mass</b>	:	85% min
<b>Moisture content</b>	:	1.2% max
<b>Packing</b>	:	MS drums lined with epoxy resin
<b>Transportation information</b>	:	UN No.3352 Class 6.1 IMDG code UN 3352 PYRETHROID PESTICIDE, LIQUID, TOXIC 6.1 PG II marine pollutant Packing Group II

### TOXICOLOGICAL PROFILE

<b>LD50 Acute oral</b>	:	Rat	92.9 mg/kg
<b>LD50 acute Percutaneous</b>	:	Rabbit	632-696 mg/kg
<b>LC50 inhalation(4hr)</b>	:	Rat	>0.55 mg/l air
<b>Skin irritation</b>	:	Rabbit	Non-irritant
<b>Eye irritation</b>	:	Rabbit	Mild-irritant
<b>Skin sensitization</b>	:	Rabbit	Not a skin sensitizer